

INSTRUMENT APPROACH CHART - ICAO

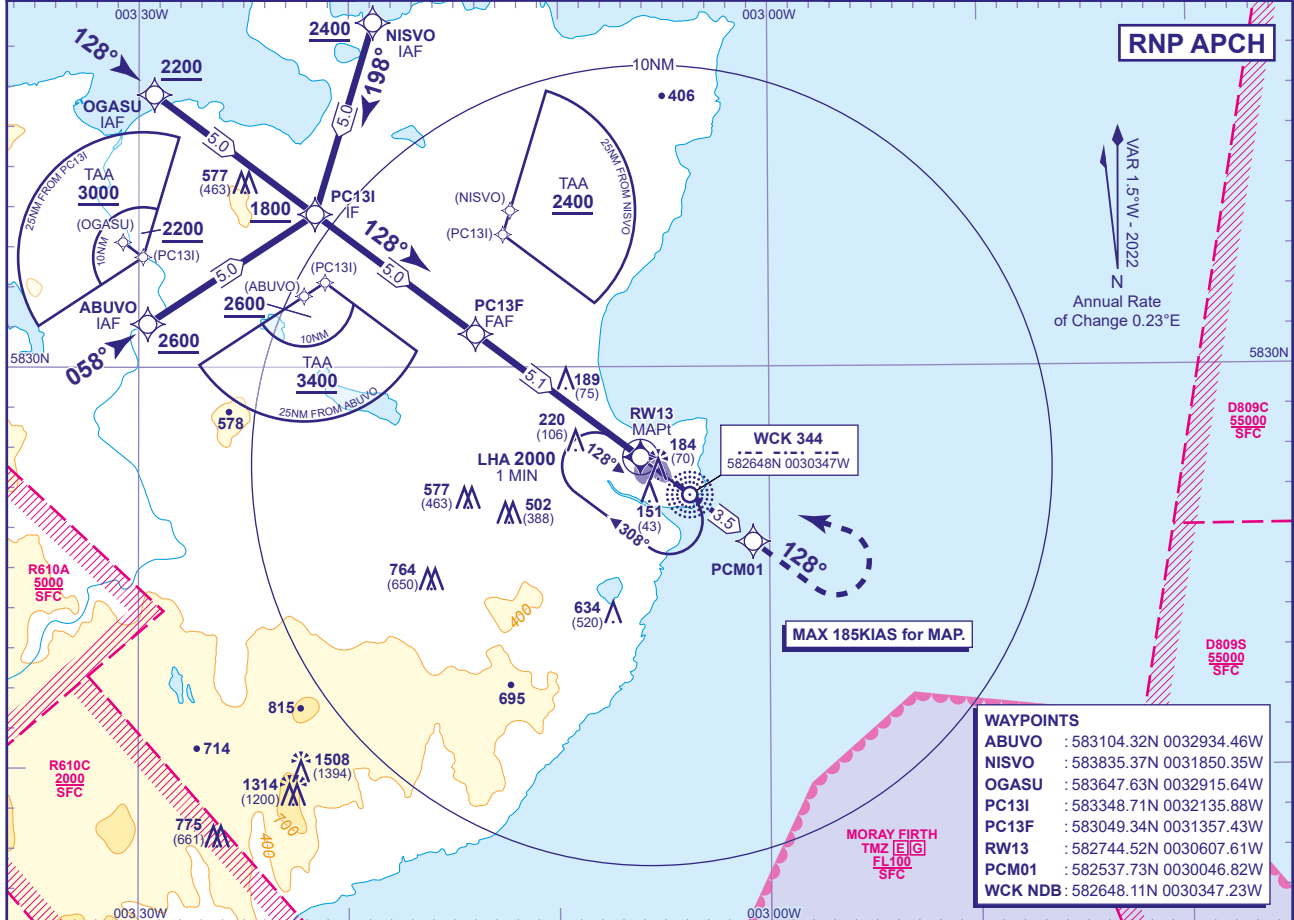
WICK

RNP

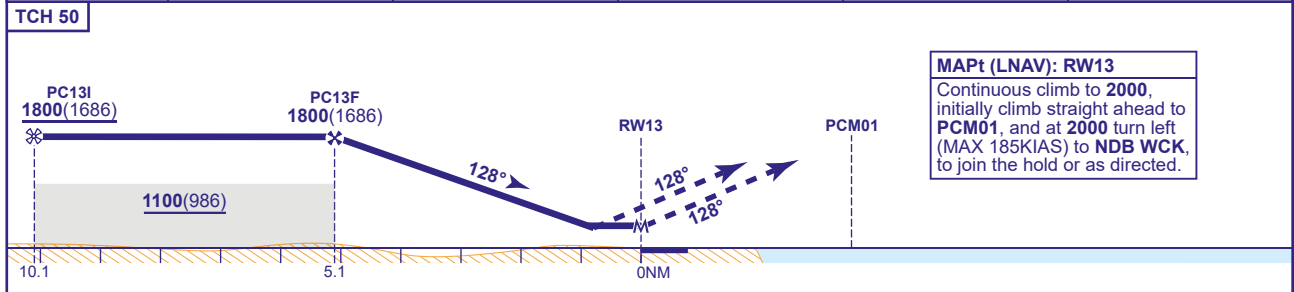
RWY 13

(ACFT CAT A,B,C)

<p>MSA 25NM NDB(L) WCK</p>	APP 119.705	WICK APPROACH	AD ELEVATION 126
	TWR 119.705	WICK TOWER	THR ELEVATION 114
	ATIS 113.600	WICK INFORMATION	OBSTACLE ELEVATION 1508 AMSL (1394) (ABOVE THR)
			BEARINGS ARE MAGNETIC
<p>MSA 10NM NDB(L) WCK</p>	TRANSITION ALTITUDE 3000		



RECOMMENDED PROFILE Gradient 5.24%, 320FT/NM					
NM to RW13	5	4	3	2	1
ALT(HGT)	1760(1646)	1440(1326)	1120(1006)	800(686)	480(366)



MAPt (LNAV): RW13
Continuous climb to 2000, initially climb straight ahead to PCM01, and at 2000 turn left (MAX 185KIAS) to NDB WCK, to join the hold or as directed.

Aircraft Category		A	B	C	Rate of descent	G/S KT	160	140	120	100	80
OCA (OCH)	LNAV	480(366)	480(366)	480(366)		FT/MIN	850	740	640	530	430
VM(C)OCA (OCH AAL)	Total Area	630(504)	630(504)	1090(964)							
	North of RWY 13/31	530(404)	620(494)	720(594)							

NOTES
1 Use of RNP procedure is strictly PPR from the aerodrome operator.
2 Missed approach reverts to conventional navigation at PCM01.

CHANGE (8/23): MSA UPDATED.